

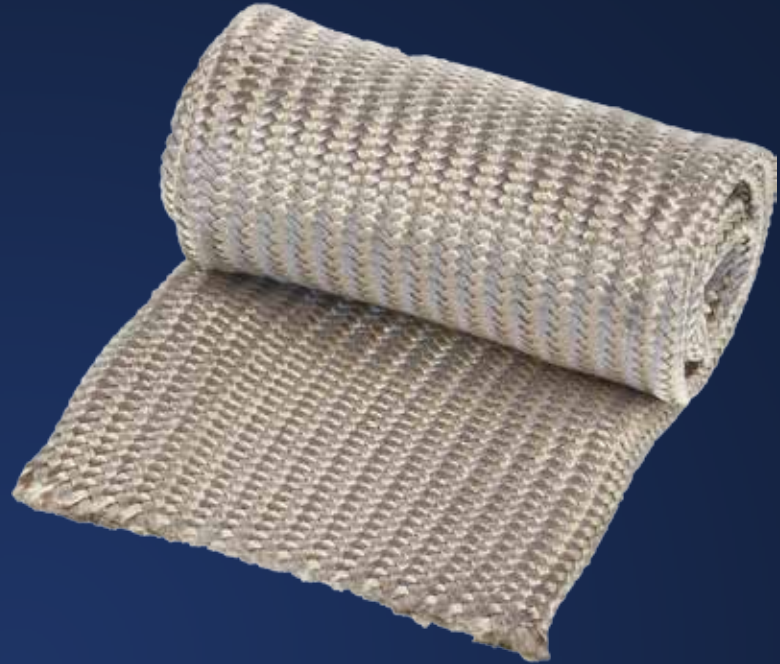


HP HOSE SLEEVE

RATED TO: 1200°F
CONTINUOUS

2000°F
INTERMITTENT

Shield radiator hoses, hydraulic hoses, hoses from heat damage, increasing their life and preventing maintenance breakdowns. Use HP Hose Sleeving to insulate air intake tubes from radiant heat lowering your intake temperatures and increasing horsepower. Special coating allows this sleeving to reflect and dissipate heat. The special braid of sleeving allows it to have an expandable inside diameter from 1-3/4" to 2-3/8". Thermal Hose Sleeving is capable of withstanding 1200°F continuous. It may be fastened using Thermal-Tie™ or hose clamp.



PART NO.	DESCRIPTION
240000	1 3/4" id x 100' roll
240003	1 3/4" id x 3' roll

APPLICATIONS:



FEATURES:

- Continuous operating temperature of 1200°F, 2000°F intermittent
- Capable of reducing up to 60% of radiant heat
- Helps to prevent vapor lock, protects wires from melting
- Sleeving wall thickness is 1/16" thick
- Made in USA